

SONIKARA SOLAR MODULE

72 CELL
POLYCRYSTALLINE MODULE

320-340W
POWER OUTPUT RANGE

17.53%
MAXIMUM EFFICIENCY

0 - +3%
POSITIVE POWER TOLERANCE

Sonikara Solar, electrical specialists and creators of energy saving designs for residential, commercial and industrial applications. Sonikara solar panel manufacturing processes utilize the best quality materials available and industry-leading equipment from around the world. We stand behind our promise of quality workmanship in all of our solar products. We are committed to building strategic, mutually beneficial collaboration with installers, developers, distributors and other partners.

Product Certificates

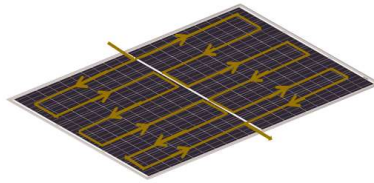
IEC/EN 61215, IEC/EN 61730



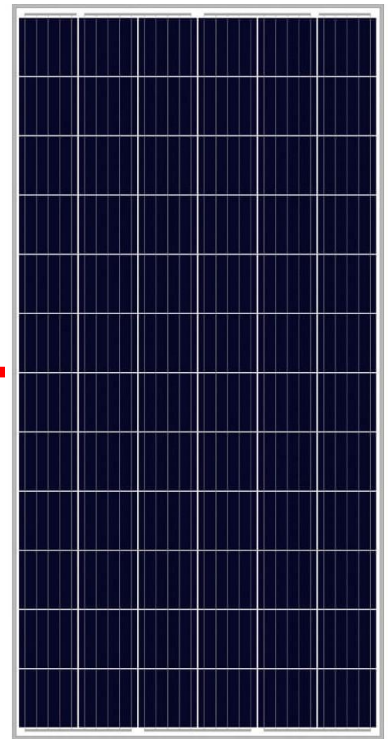
CAUTIONS:
READ SAFETY AND INSTALLATION
INSTRUCTIONS BEFORE USING THE PRODUCT.



Sonikara Solar
www.sonikarasolar.com



Half-cut Cell
Module Available



Ideal For Large Scale Installations

- High power footprint reduces installation time and BOS costs
- Up to 1500VDC system voltage

Maximum Limited Space

- Up to 175.3W/m² power density

Highly Reliable Due to Stringent Quality Control

- Over 30 in-house tests (UV, TC, HF, etc.)
- In-house testing goes well beyond certification requirements
- Fire Class A tested
- 100% EL double inspection

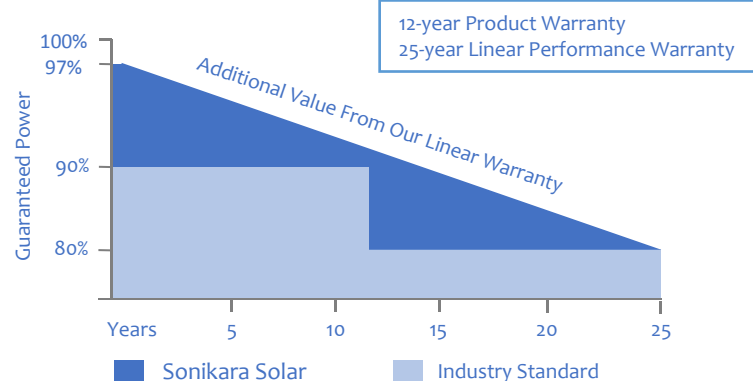
Severe Weather Resilience

- 2400Pa wind load
- 5400Pa snow load
- 35mm hail stones at 97km/h

Durability Against Extreme Environmental Conditions

- Salt mist corrosion tested, perfect for harsh climatic conditions

Linear Performance Warranty

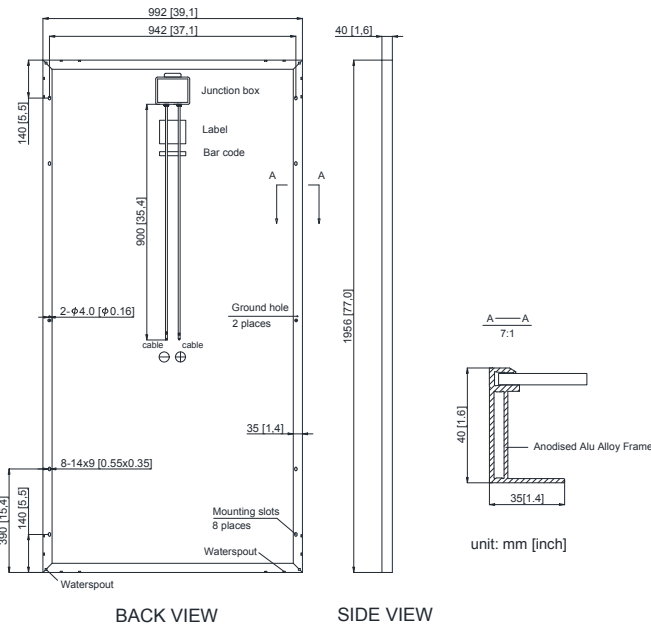


12-year Product Warranty
25-year Linear Performance Warranty

Construction Materials

Front Glass	3.2mm, Low Iron, Tempered Glass
Frame	Anodized Aluminum Alloy
Junction Box	IP67 Rated
Output Cables	TUV 1 × 4mm ² , Length: 900mm
Connector	MC4 (IP67)
Encapsulation Material	EVA
Backsheet	TPT
Fixing Adhesive	Silicone Sealant

Mechanical Diagrams



Electrical Parameters at STC

Module type	CL-SS335P-72 Series			
Rated Maximum Power (P _{max} /W)	320	330	335	340
Maximum Power Voltage (V _{mp} /V)	37.45	37.85	38.00	38.30
Open-circuit Voltage (V _{oc} /V)	45.75	46.14	46.34	46.49
Maximum Power Current (I _{mp} /A)	8.55	8.72	8.82	8.88
Short-circuit Current (I _{sc} /A)	9.00	9.18	9.26	9.32
Module Efficiency (%)	16.50	17.01	17.27	17.53
STC: Irradiance 1000W/m, Cell Temperature 25°C, AM = 1.5				

Packaging Configuration

Pieces Per Carton: 2 | Pieces Per 20GP/40HQ: 232/574

Mechanical Data

Solar Cells	Poly 156.75mm × 156.75mm
Number of Cells	72Cells (6 × 12)
Module Dimensions	1956mm × 992mm × 40mm
Weight	22kg

Temperature Coefficient

Power Tolerance	0 ~ +3%
Temperature Coefficient of P _{max}	-0.40%/°C
Temperature Coefficient of V _{oc}	-0.33%/°C
Temperature Coefficient of I _{sc}	0.058 %/°C
NOTC	(45 ± 2) °C

Operating Conditions

Max. System Voltage	1500VDC (IEC)
Max. System Fuse Rating	15A
Operating Temperature	-40 ~ +85°C
Max. Static Load, Front (Snow)	5400Pa
Max. Static Load, Back (Wind)	2400Pa

IV Curves

